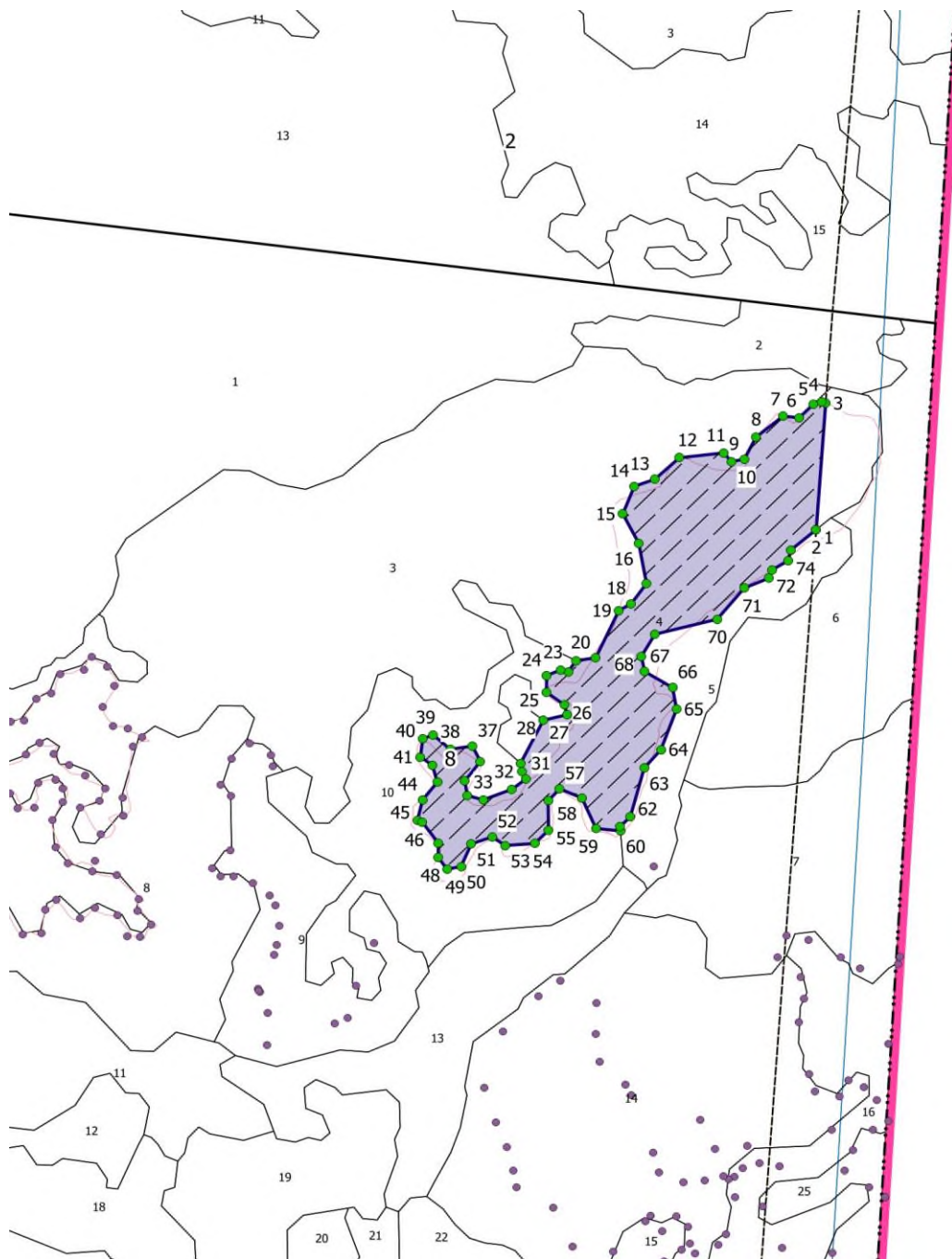


С Х Е М А
расположения лесного участка для выполнения работ по компенсационному лесовосстановлению

Лесничество: Яйское
Уч. лесничество: Яйское
Урочище: Ижморское
Квартал: 8 Выдел: 4
Площадь: 12,2 га



№ п/п	Номера точек	Румбы линий	Длина, м	Координаты узлов в СК WGS-84	
				Л, Долгота	В, Широта
1	1-2	-	0	86°20'10.01"	56°37'11.75"
2	2-3	СВ:4°6'21.49"	190,74	86°20'10.01"	56°37'11.75"
3	3-4	СЗ:69°24'50.62"	6,57	86°20'10.82"	56°37'17.91"
4	4-5	ЮЗ:71°46'55.76"	12,42	86°20'10.45"	56°37'17.98"
5	5-6	ЮЗ:45°13'38.38"	28,57	86°20'9.76"	56°37'17.86"

6	6-7	C3:84°16'44.26"	23,42	86°20'8.57"	56°37'17.21"
7	7-8	Ю3:51°8'1.53"	49,97	86°20'7.2"	56°37'17.28"
8	8-9	Ю3:27°16'25.86"	37,78	86°20'4.91"	56°37'16.27"
9	9-10	Ю3:79°49'51.93"	18,89	86°20'3.89"	56°37'15.18"
10	10-11	C3:39°46'16.34"	16,93	86°20'2.79"	56°37'15.07"
11	11-12	Ю3:83°27'49.49"	64,47	86°20'2.16"	56°37'15.49"
12	12-13	Ю3:47°32'22.17"	48,1	86°19'58.39"	56°37'15.25"
13	13-14	Ю3:70°33'24.76"	31,4	86°19'56.3"	56°37'14.2"
14	14-15	Ю3:21°52'50.35"	44,82	86°19'54.56"	56°37'13.86"
15	15-16	ЮВ:27°31'24.34"	49,78	86°19'53.57"	56°37'12.52"
16	16-17	ЮВ:10°30'15.02"	61,75	86°19'54.93"	56°37'11.09"
17	17-18	Ю3:35°56'18.41"	37,63	86°19'55.59"	56°37'9.12"
18	18-19	Ю3:60°7'5.11"	20,53	86°19'54.29"	56°37'8.14"
19	19-20	Ю3:25°11'50.41"	78,89	86°19'53.24"	56°37'7.81"
20	20-21	Ю3:81°59'26.34"	28,73	86°19'51.27"	56°37'5.49"
21	21-22	Ю3:33°31'18.44"	20,27	86°19'49.59"	56°37'5.37"
22	22-23	C3:74°38'16.8"	10,91	86°19'48.93"	56°37'4.82"
23	23-24	Ю3:67°42'45.5"	22,28	86°19'48.31"	56°37'4.91"
24	24-25	Ю3:0°33'11.01"	25,35	86°19'47.1"	56°37'4.64"
25	25-26	ЮВ:53°47'33.77"	32,38	86°19'47.09"	56°37'3.82"
26	26-27	ЮВ:12°41'7.52"	15,04	86°19'48.62"	56°37'3.2"
27	27-28	Ю3:76°21'17.13"	34,88	86°19'48.82"	56°37'2.72"
28	28-29	Ю3:26°57'33.95"	72,61	86°19'46.82"	56°37'2.46"
29	29-30	ЮВ:10°12'29.82"	12,43	86°19'44.89"	56°37'0.36"
30	30-31	ЮВ:24°42'59.12"	12,73	86°19'45.02"	56°36'59.97"
31	31-32	Ю3:52°11'55.56"	25,4	86°19'45.33"	56°36'59.59"
32	32-33	Ю3:69°14'44.06"	44,56	86°19'44.15"	56°36'59.09"
33	33-34	C3:73°39'46.05"	23,72	86°19'41.7"	56°36'58.58"
34	34-35	C3:9°14'53.2"	22,08	86°19'40.36"	56°36'58.79"
35	35-36	СВ:37°31'4.33"	36,87	86°19'40.15"	56°36'59.5"
36	36-37	C3:26°19'58.83"	25,93	86°19'41.47"	56°37'0.44"
37	37-38	Ю3:81°32'57.45"	32,54	86°19'40.79"	56°37'1.2"
38	38-39	C3:48°32'18.5"	32,41	86°19'38.9"	56°37'1.04"
39	39-40	Ю3:70°19'14.49"	16,18	86°19'37.47"	56°37'1.74"
40	40-41	Ю3:7°10'44.4"	27,91	86°19'36.57"	56°37'1.56"
41	41-42	ЮВ:54°45'43.95"	21,2	86°19'36.37"	56°37'0.66"
42	42-43	ЮВ:15°22'57.37"	26,76	86°19'37.39"	56°37'0.27"
43	43-44	Ю3:38°44'17.16"	33,93	86°19'37.8"	56°36'59.43"
44	44-45	Ю3:13°30'54.85"	31,68	86°19'36.56"	56°36'58.58"
45	45-46	ЮВ:68°53'38.33"	7,41	86°19'36.12"	56°36'57.58"
46	46-47	ЮВ:36°10'14.14"	39,39	86°19'36.53"	56°36'57.49"
47	47-48	Ю3:0°29'6.08"	21,68	86°19'37.89"	56°36'56.46"
48	48-49	ЮВ:36°18'35.2"	21,8	86°19'37.88"	56°36'55.76"
49	49-50	СВ:78°26'56.12"	20,55	86°19'38.64"	56°36'55.19"
50	50-51	СВ:23°19'29.6"	36,93	86°19'39.83"	56°36'55.32"
51	51-52	СВ:70°39'48.46"	31,9	86°19'40.69"	56°36'56.42"
52	52-53	ЮВ:56°11'0.92"	22,98	86°19'42.46"	56°36'56.76"
53	53-54	СВ:86°5'57.91"	42,5	86°19'43.58"	56°36'56.35"
54	54-55	СВ:45°9'49.92"	28,39	86°19'46.08"	56°36'56.44"
55	55-56	C3:0°47'31.49"	44,26	86°19'47.26"	56°36'57.09"
56	56-57	СВ:42°27'10.51"	24,56	86°19'47.23"	56°36'58.53"
57	57-58	ЮВ:66°53'49.04"	34,86	86°19'48.2"	56°36'59.11"

58	58-59	ЮВ:24°1'30.14"	50,64	86°19'50.09"	56°36'58.67"
59	59-60	ЮВ:84°36'41.16"	35,52	86°19'51.3"	56°36'57.17"
60	60-61	СЗ:4°7'39.1"	6,8	86°19'53.38"	56°36'57.06"
61	61-62	СВ:45°46'29.08"	20,41	86°19'53.35"	56°36'57.28"
62	62-63	СВ:15°13'38.64"	76,17	86°19'54.21"	56°36'57.74"
63	63-64	СВ:41°4'28.31"	36,88	86°19'55.39"	56°37'0.12"
64	64-65	СВ:20°15'44.92"	64,84	86°19'56.82"	56°37'1.02"
65	65-66	СЗ:9°52'24.39"	33,18	86°19'58.14"	56°37'2.99"
66	66-67	СЗ:59°15'28.07"	46,77	86°19'57.8"	56°37'4.05"
67	67-68	СЗ:12°3'40.96"	23,42	86°19'55.44"	56°37'4.83"
68	68-69	СВ:30°24'30.3"	38,68	86°19'55.15"	56°37'5.57"
69	69-70	СВ:75°50'4.89"	92,69	86°19'56.3"	56°37'6.65"
70	70-71	СВ:39°50'33.97"	61,11	86°20'1.59"	56°37'7.38"
71	71-72	СВ:67°16'8.8"	38,27	86°20'3.89"	56°37'8.9"
72	72-73	СВ:21°25'15.11"	13,74	86°20'5.97"	56°37'9.38"
73	73-74	СВ:59°44'7.69"	26,92	86°20'6.27"	56°37'9.79"
74	74-75	СВ:12°42'13.26"	16,41	86°20'7.63"	56°37'10.23"
75	75-2	СВ:50°4'1.66"	48,01	86°20'7.85"	56°37'10.75"

Условные обозначения

- граница лесного участка
- граница выдела (с нумерацией)
- привязка
- неэксплуатационные участки (с привязкой)